

Program Information

2020

KOICA-Korea University Master's Degree Program in Finance and Tax Policy

August 18, 2020 – January 16, 2022
Seongnam & Seoul, the Republic of Korea

KOICA  **CIAT**
KOICA Fellowship Program
Korea International Cooperation Agency

 **KOREA**
UNIVERSITY
Korea University

Participants are strongly advised to thoroughly read and follow the provided instructions in the Program Information.

Contents

PART I. PROGRAM OVERVIEW	<u>1</u>
PART II. PROGRAM CONTENTS	<u>3</u>
PART III. TRAINING INSTITUTE	<u>6</u>
PART IV. ACADEMIC REGULATIONS.....	<u>15</u>
PART V. REQUIRED DOCUMENTS	<u>17</u>
PART VI. CONTACTS	<u>19</u>

I . PROGRAM OVERVIEW

■ **Program Title: KOICA-Korea University Master's Degree Program in Finance and Tax Policy**

■ **Duration**

- Stay duration: August 18, 2020 – January 16, 2022 (17 months of study in Korea)

· During 17 months in Korea University, students are strongly recommended to complete their thesis.

- Academic duration: September 2020 - February 2022 (18 months)

· In accordance to the university regulations, the diploma will be issued in February 2022.

■ **Degree: Master's Degree in International Studies (International Development and Cooperation)**

■ **Objectives**

- 1) To develop human resources who can contribute to the socio-economic advancement of developing countries
- 2) To train key government experts in the fields of 'finance and tax policy' needed by developing countries
- 3) To share Korea's economic development experience and train experts who can contribute to global economic development
- 4) To enhance the understanding on Korean industries and corporate management system

■ **Training Institute: Graduate School of International Studies, Korea University (KU GSIS)**

■ **Number of Participants: 20 Government Officials**

■ **Language: English fluency that requires no translation**

■ **Accommodations:**

- **KOICA International Cooperation Center (ICC)**

- **Anam Global House Dormitory**

- The dormitory has single, double, and triple rooms, but its allocation is subject to availability.
- Each person is provided with a desk, a chair, and a bed.
- Two/three people share a bathroom.

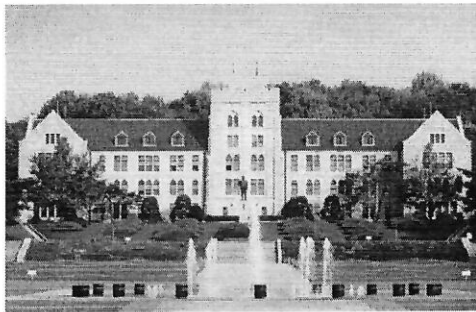
- One communal kitchen is located on the first floor; 5 refrigerators, shelves, 6 electronic stoves, 6 sinks, and 1 water purifier are shared with others.
- One laundry room; 6 washing machines, 6 dryers.

- Anam 2 Dormitory

- Double/ triple rooms
- Each person is provided with a desk, a chair, and a bed.
- Every floor has shared bathrooms and a kitchen.

※ In the first semester, KOICA students will be randomly assigned to single or double rooms due to the lack of single rooms, but all of you will be assigned to single rooms in the second semester.

<Korea University Main Hall>



II. PROGRAM CONTENTS

1. ACADEMIC SCHEDULE

Session	Date (YYYY.MM.DD)	Contents / Remarks
Preparatory Session	2020.08.18 ~ 08.20	Arrival, KOICA Orientation
	2020.08.21	Arrival to KU, KU GSIS Orientation
Pre - Course	2020.08.24 ~ 08.28	Korean Language
Fall Semester (1st semester)	2020.09.01 ~ 12.18	
Winter Session	2020.12.23 ~ 2020.12.31	Practical Special Lecture Series
Winter Break	2021.01.01 ~ 03.01	
Spring Semester (2nd semester)	2021.03.02 ~ 06.18	
Field Trip	2021.07.05 ~ 07.06	
Summer Break	2021.07.07 ~ 08.31	
Fall Semester (3rd semester)	2021.09.01 ~ 2021.12.21	* Thesis Writing Guidance will be offered
Wrap-up Session	2021.11.24	Final Oral Defense Presentation
	2021.12.17	Completion and Farewell Ceremony
	2022.01.1~16	Departure

*The above schedule is subject to change.

**A detailed Program Schedule will be provided upon arrival.

2. CURRICULUM

1) Curriculum & Credits

- The total number of credits required to complete the Master's program: 39 credits

* The above curriculum is subject to change.

< Number of Credits Required by Semester >

Category	Credits	Course Title
Fall Semester 2020		
Major Elective	3	International Finance
Core Elective	3	International Economics
General Elective	3	Special Topics in International Commerce/ Qualitative Research Methods
Major Elective	3	Tax Policy and Economic Development
Major Elective	3	Public Finance
Spring Semester 2021		
Core Compulsory	3	Research Methods
Regional Course	3	Tax Administration in Korea and its Achievements
Core Elective	3	Introduction of International Development Cooperation
Major Elective	6	Budget Systems and Policy/ Macroeconomics/ Policy Evaluation
Fall Semester 2021		
Core Compulsory	3	Thesis Research
Regional Course	3	Tax Law in Korea/ Foreign Trade and Investment of Korea
Core Elective	3	International Business

* The above curriculum is subject to change.

2) Graduation Requirements.

- In order to graduate, students must take 39 credits, and submit a thesis. The participants will receive a Master of Arts in International Studies degree upon successful completion and acceptance of a Master's thesis.

< Number of Credits Required in Each Category >

Category	Credits
Core Compulsory Courses (Research Methods, Thesis Research)	6 Credits
Core Elective Courses (International Business, Introduction to International Development Cooperation, International Economics)/ General Elective	12 Credits
Major Electives/Regional Courses(21courses related with Finance and Tax Policy)	21 Credits
Total	39 Credits

3. EXTRACURRICULAR ACTIVITIES (TENTATIVE)

- 1) **Field trip** - Korea Development Institute, etc. (The places are subject to change.)
- 2) **Industrial visit** – Once during this program: KIA Motors Sohari Plant, the Independence Hall of Korea, the Ministry of Economy and Finance, and the Korea Institute of Public Finance (The places are subject to change.)
- 3) **Fellowship event** – Buddy program: 1 Korean student and 3 or 4 KOICA students make a team. These teams will engage in various leisure activities such as going out for dinner, visiting Korean historical sites, amusement park, etc. at least once a month.
- 4) **Round Tables** – KOICA students present and discuss about their own tax policy and the trends.
- 5) **Other extracurricular activities** – Special practical lecture series: These lectures are specially designed to promote the knowledge and skills that can be applied to students' jobs, when they return to their home countries.

III. TRAINING INSTITUTE

1. GENERAL INFORMATION

1) Korea University

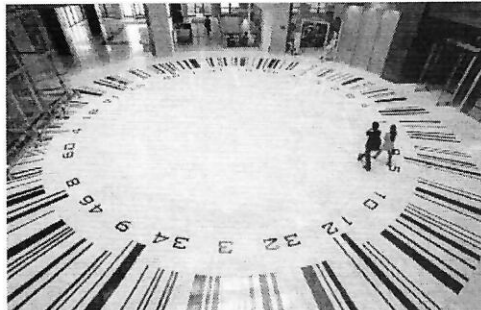
Korea University (hereafter, KU), originally founded as Bosung College, was founded in 1905 by the Treasurer of the Royal household, Young-Ik, Yi, who believed that educating the young generation was the only way to secure Korea's independent status as a nation. Korea University is the country's first institution of higher learning funded and administered solely by Koreans. As such, KU has played a significant role in shaping Korea socially, culturally and academically.

While successive generations of faculty and students remain deeply committed to the University's proud national heritage, they have also been at the forefront of Korea's globalization. The increasing number of international students on campus is a testimony to the University's growing reputation abroad, as well as within Korea. The year of 2005 was the centennial of Korea University. Korea University is in the heart of Global Pride.

Korea University has two campuses covering over 182 acres: the Anam and Sejong campuses. The Anam campus is divided into three sections: the Main campus, the Science campus, and the Medical campus including Housing facilities. The Sejong campus is in Jo-Chi-Won, Chung-nam Province.

The Tiger, the emblem of Korea University and a symbol of dignity and courage, represents truth and justice. The monument of the tiger-overacting the globe standing in the main campus of the University reflects not only the drive for excellence, but also the University's global mission.

<Korea University Campus>



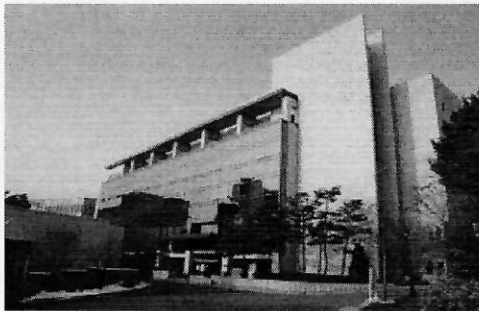
2) Graduate School of International Studies (GSIS)

GSIS was established in 1991 in response to the growing forces of globalization and internationalization. By 1996, the Korean government was calling for experts in international commerce, international relations, and area studies; and in late 1996, the Korean Ministry of Education designated KU GSIS as one of Korea's top five graduate schools of international studies qualified for a major five-year government grant.

The major goals of GSIS are to educate and train specialists in international commerce, international development, international security, area studies and Korean studies. It offers two master's degree programs under the departments of International Studies and Korean Studies. GSIS welcomes all nationalities. All courses are taught in English.

Apart from the regular program offering, KU GSIS is also operating a variety of extracurricular academic programs in order to provide students more chances to widen their scope of knowledge and global experience.

<KU GSIS International Studies Hall>



2) Homepage:

- Korea University website is at: <http://www.korea.ac.kr/mbshome/mbs/university/index.do>
- Graduate School of International Studies (GSIS) website is at: <https://gsis.korea.ac.kr/ko/>

2. ACCOMMODATION

1) Anam Global House

Anam Global House is an air-conditioned, coded home for 406 men and women. Anam Global House offers single, doubles, or triple rooms and has semi-private baths. Bathroom facilities are installed in the room and are shared by the roommates. Students will be assigned to single, double, or triple rooms. The room allocation is subject to availability.

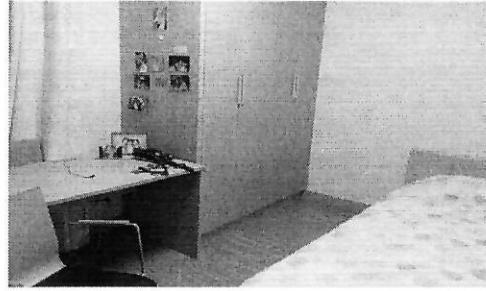
- Each person is provided with a desk, a chair, a bed
- Two/three people share a bathroom
- One communal kitchen is located in every floor. And refrigerators, shelves, electronic stoves, a sink are shared with others in the floor.

* Note: For further information, visit the website at: <http://dorm.korea.ac.kr>.

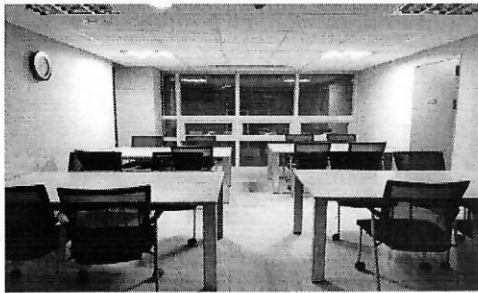
<Anam Global House>



<Anam Global House Room>



<Anam Global House Study Room>



<Anam Global House Laundry Room>



2) Dining Services

■ Meal Coupon Service at Global House

Residents may purchase a meal coupon, which is valid for breakfast, lunch and dinner at the Global House Cafeteria. Coupons can be purchased at the cafeteria on the 1st floor of Global House during the opening hours. You should purchase 120 coupons, 160 coupons or 200 coupons at once. As of October 2015, the price for 1 meal is approximately USD 3 (3,500 KRW).

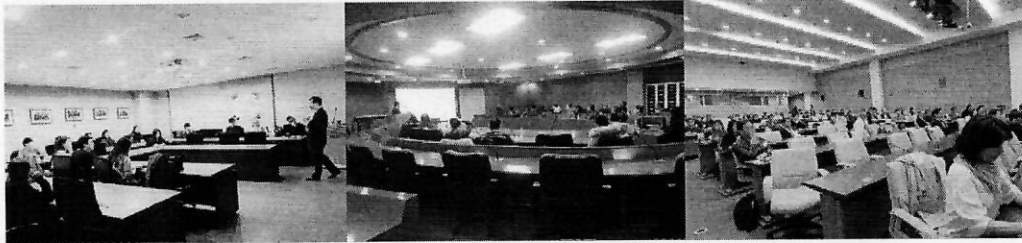
3. OTHER INFORMATION

1) GSIS Lecture rooms

There are 15 lecture rooms in total from first floor to fourth floor in the International Studies Hall for GSIS students. The representative ones are as below:

■ **KOICA exclusive room**

This room is for exclusive use for KOICA students. This lecture room 219 is used whenever there are special practical lectures and regular meetings.



■ **Global meeting hall**

This hall 214 is not only for big lectures but also for big events such as orientations of students, graduation ceremony and conferences.

2) GSIS Seminar room

■ **Circular Seminar room**

Located on the first floor of International Studies Hall, this is used as seminar room, conferences, and also some classes are done in this room.



3) Dining on Campus

There are several dining places and cafeterias all over the campus. There are also convenience stores and snack bars over the campus.

	Location	Contact
Dining places & Cafeterias	International Studies Hall cafeteria (KU Bakery)	02-3290-1815
	Student Union Building Cafeteria (Basement)	02-3290-1811
	Student Union Building Cafeteria (first floor)	

	Living Plaza Cafeteria for Students	
	Lining Plaza Snack bar for Students	
	Alumni Hall Student Cafeteria	02-921-7218
	Techno-complex Research Center Cafeteria	02-3290-4348
	Meals and Saecham (Restaurant)	02-3290-2653
Convenient stores & Snack bars	Communications Building	02-925-5894
	Tiger Plaza	
	College of Education	02-925-5897
	Central Library (Basement, 1st floor)	02-928-0876
	Central Square (Basement, 1st floor)	02-3290-2654
	New building, College of Business Administration (Basement, 1st floor)	02-3290-2564
	College of Law (New Building, 5th floor)	02-3290-1817
	College of Life Science & Biotechnology (Basement, 1st floor)	02-3290-4375
	University Dormitory (Basement, 1st floor)	02-923-3897
	College of Medicine (1st floor)	02-920-6179



4) University Library

Korea University library contains more than 2.7 million books, making it the largest university library in Korea. There are four main university libraries; Main Library (Building #116), Graduate School Library (Building #102), Centennial Digital Library (Building #144) and Science Library (Building #216). There are also Law Library, Sudang Digital Library, ARI East Asian Library, Foreign Research Information Center, Academic information Center (Sejong), Medical Library and Health Science Library.

▣ Main Library

The Main Library opened in 1978 and renovated in June 2004. The Library is four-story granite building with 7 levels of stacks, having materials for Humanities & Social Sciences. On the ground-floor, there are General Reading Rooms with 350 seats, Information Center providing the basic instruction for the library facilities and book return procedure, and E-Lounge where users can search and use scholarly information sources and take online classes. On the 2nd floor, users can browse Journals & Reference Materials for researcher's demands and on the 3rd, 4th floor; monographs are stocked in DDC order. Moreover, our library is equipped with Carrels supporting intensive research/study and special facilities for disabled people.

* Administrations Office: 82-2-3290-1501, 1509

* Homepage: <http://library.korea.ac.kr>

<Main Library and Lobby>



▣ Library Hours

- Weekdays 09:00 – 22:00
- Saturdays 09:00 – 15:00
- Closed on Sundays and Holidays
- Reading rooms open every day 06:00 – 23:00

Libraries	Sections	Mon-Fri	Sat
Main Library	Journal & References Inter Library Loan Foreign Research Information Center Information Center Books (000-599) Books (600-999)	09:00 - 22:00	09:00 - 15:00
	ARI East Asian Library	09:00 - 17:30	Closed
Graduate School Library	Loan Office Special Collections	09:00 - 17:30	Closed
CDL	Information Commons Multimedia Room UN Depository Library / European Documentation Centre	09:00 - 22:00	09:00 - 15:00

	Course Reserve Room		
	MPL	09:00 - 17:30	Closed
Science Library	Circulation Room Serials Room Reference Room	09:00 - 22:00	09:00 - 15:00
	Multimedia Room Browsing Room	09:00 - 17:30	Closed
Medical Library	Serials Room Electronic Information Room Monographs Room	08:30 - 17:30 08:30 - 19:30	Closed
General Reading Rooms	06:00 - 23:00		
24-Hour Reading Rooms	00:00 - 24:00		

■ GSIS Library

It's located on the 1st Floor of the International Studies Hall Building. The GSIS library opens from 9:00AM to 5:30PM on weekdays during semester and from 9:00AM to 4:30PM during vacation. The GSIS reading room opens from 6:00AM to 11:00PM every day.

☎ 82-2-3290-1399 (Room 121)

GSIS Library	Sections	Mon-Fri	Sat
GSIS Library	Loan Office Thesis and Dissertations Room	09:00 - 17:30	Closed
GSIS Reading Room	Available only for GSIS Students	06:00 - 23:00	06:00 - 23:00

5) Lounge/Fitness

Facility	Location	Contact
Student Lounge at Each College	Each college has a student lounge: each lounge is furnished with sofa, tables, a vending machine for soft drinks, and drinking water available.	
Female Student Lounge	Faculty and Women Student's Hall, Science Library (2nd floor), Cafeteria (3rd floor, Science Campus), and Communications Building Annex (3rd floor)	
KU Tiger Dome (Hwa Jeong Gym)	This gymnasium has a main stadium, Sub arena, Fitness center, Squash court, Aerobic studio, 250meter track and an Indoor rock-climbing facility	02-3290-4096
Hana Fitness Center	The club is located in Hana Square and equipped with different equipment and shower facilities for both men and women. Fees charged.	02-3290-4027
KU Fitness Club	The club is located in the 4.18 Memorial Hall (Basement, 2nd floor) and equipped with different kinds of health equipment and shower facilities for both men and women. Fees charged.	02-3290-1762

Table Tennis	There are five tables in the 4.18 Memorial Hall (Basement, 2nd floor). No fees charged.	
Ice Link	University Green Campus	02-3290-4243~5

7) Other Facilities

Facility	Location	Contact
KU Cinema Trap	Media Hall 4 Floor #412	02-924-6579
Museum	Korea University Museum	02-3290-1512~3
Post Office	The annex to Communication Building (3rd floor)	02-3290-1820
Music Hall	Communication Hall, 1st floor	02-922-5204
Auditorium	Inchon Memorial Hall	02-3290-1771
	The 2nd Student Union Hall (Basement, 2nd floor)	02-3290-1772
	The Alumni Hall (Basement, 1st floor)	02-3290-1771
	College of Business Administration	
Help for the disabled	www.kujang.net	02-3290-1221

4. HEALTH CARE

▣ Medical Facilities in the campus/ City

There is health care center and student medical mutual aid service in the central square where primary treatment can be done.

Facility Name	Location	Contact	Offering Service
Health Care Center	KU Main Campus	02-3290-1571	Services include: emergency aid, health consultations, facilities for temporary rest and recovery, and information related to health centers, services, etc.
	KU Science Campus	02-3290-1572	
Student Medical Mutual Aid Service	KU Main Campus	02-3290-1573	A certain percentage of medical fee paid by the student, will be reimbursed to him/her under the plan.
	KU Science Campus	02-3290-1570	

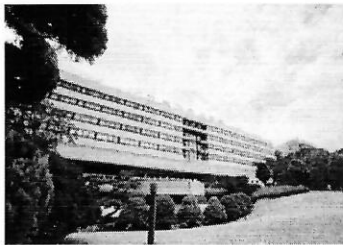
"Anam Hospital, Korea University Medical Center" is affiliated hospital of Korea University. Diagnostic and treatment equipment, from Magnetic Resonance Imaging (MRI) systems to radiation fluoroscopes, represent the latest technologies available for the detection and treatment

of disease. The three hospitals in Anam, Guro and Ansan have a combined capacity of about 2,000 beds. This hospital is general hospital where most of the health problems can be treated.

H and B Clinic, this is smaller hospital of Anam Hospital but only the size of the hospital is different. This is also hospital where most of the health problems can be treated. Both hospitals are 5 to 10 minutes away from the university.

	Location	Business Hours	Contact
Anam Hospital	Inchon-ro 73, Anam-dong, Seongbuk-gu, Seoul	8:30~5:30 daily	1577-0083
H and B Clinic	101-53 Anam-dong 5-ga, Seongbuk-gu, Seoul	8:30~6:00 daily	02-923-5905

<KU Medical Center>



<Korea University Healthcare Center>



IV. ACADEMIC REGULATIONS

1. Attendance and Absenteeism

In the event a student is absent for any of the reasons below, the student must notify the appropriate KUGSIS department, faculty and KOICA, and get approval in advance and submit documents that they will request.

- Death of an immediate family member (grandparents, parents, siblings) or equivalent circumstance
- Severe illness or emergency situations

2. Must reside in dormitory

- Students must reside in dormitory that you are randomly assigned.
- Living off-campus is not allowed.

3. Must abide by residency regulations

- A student who violates residency regulations will be evicted from the dormitory and he or she must return to his or her country immediately.

4. Light meals can be cooked in the shared kitchen

- Electronic stove, fridge, microwave, sink and other basic facilities are installed.
- The kitchen needs to be in order and be cleaned by individuals who use the common area.
- Those who fail to maintain the kitchen tidy and neat will be given warnings. Three warnings will lead to a restriction in using the kitchen.
- Cooking inside the dormitory room is prohibited at all times.

5. Examinations and Grade Evaluations

1) Regular Exams and Make-up Exams

- Regular Exams: Mid-term (8th week of semester), Final (end of semester)

2) Qualification for General Exam

- Applicants for the General Exam must be enrolled in their third semester at the time of application with an average GPA of at least 3.0 or higher.

3) Exemption from the General Exam

- When an average GPA until the start of third semester is 3.3 or higher.

4) Scholastic Performance Evaluation Method

- Scholastic performance will be based on GPA 4.5 [a 100-point scale] for each course registered. Grades will be based on classroom performance (assignments, presentations, attendance) and test performance (mid-term and final exams).
- Grades will be marked on a curve scale as follows;

GPA	4.5	4.0	3.5	3.0	2.5	2.0	0.0
Grade	A+	A	B+	B	C+	C	F
Score	100-95	94-90	89-85	84-80	79-75	74-70	69-0

V. REQUIRED DOCUMENTS

- ※ All documents should be sent to the KOICA Regional Office or the relevant government office.
- ※ Please do not send the materials to Korea University.

- 1) **Completed application forms (KU GSIS Application Form and KOICA Application Form)**
- 2) **Statement of Purpose (SOP):** SOP is an essential part for our evaluation to see whether you are qualified for this program or not. It should be 3 pages, 12 point, Times New Roman, 1.5 spaced, describing the following factors:
 - Your objectives applying for this program
 - Your study plan at KU GSIS
 - How your education and work experience qualify for this program
 - Your contribution to the fields of Finance and Tax Policy and how KU GSIS-KOICA scholarship program will help you achieve your goals
 - Future career path after completing this program
- 3) **Two photos (portrait shots):** 3.5 X 4.5 cm
- 4) **Certificate of Degree** (or Certificated Expected Graduation Form) of all colleges and undergraduate schools (should be written in English)
- 5) **Official transcripts of all colleges and undergraduate schools**
 - Must be APOSTILLED or CONSUL VERIFIED
 - Must be written in English
- 6) **A copy of passport**
- 7) **Two letters of recommendation from professors familiar with the applicant's academic work or from professional supervisors**
- 8) Certificate of Employment (Optional)
- 9) Oath of Undertaking for the Participant: Only successful applicants are required to submit this form.

Important Notes for All Applicants:

1. All KOICA and KU GSIS forms should be typed in English NOT handwritten. And all documents should be in English. If it is in any other language, you must submit a notarized/ certified translation (in English or Korean) completed by a public notary in the country in which the document was originally produced.
2. If any of the submitted materials contain false information, admission will be rescinded.
3. Original documents should be submitted. Should they be unavailable, however, copies must be authorized by the originating institution before they are submitted.
4. Applicants whose forms and supporting documents are incomplete or unsatisfactory will be disqualified from the admission process.

5. Be sure to make and keep photocopies of all completed forms. Submitted documents become property of KU GSIS and will not be returned to the applicants.
6. Detailed account of individual admissions decision for each applicant cannot be disclosed.
7. Please be sure that, in principle, any modification or cancellation will not be accepted after completing the application.
8. Applicants should take full responsibility for any disadvantages due to the mistakes or omissions on the application.
9. Applicants, who transferred during their prior course of studies, must submit their full complete academic records from all the applicable institution including Transcripts and Certificate of Graduation / Attendance.

VI. CONTACTS

1. CONTACT INFORMATION

1) Korea International Cooperation Agency (KOICA)

· **Program Manager: Ms. Minji KIM**

· Address: 825 Daewangpangyo-ro, Sujeong-gu, Seongnam-Si, 461-833 Gyeonggi-do Republic of Korea

· Tel: +82-31-740-0679

· E-mail: kmj@koica.go.kr

· Homepage: <http://www.koica.go.kr>

· **Program Coordinator: Ms. Yunjung LEE**

· Tel: +82-31-777-2859

· E-mail: yjlee@koworks.org

2) Graduate School of International Studies (GSIS), Korea University

· **Program Advisor: Prof. Kyunglim SHIN**

· Tel: +82-2-3290-2588 (Office)

· Fax: +82-2-929-0402

· E-mail: sklim2423@korea.ac.kr

· **Administration Office: Ms. Hana JIN**

· Tel: +82-2-3290-1397 (Administration Office)

· Fax: +82-2-929-0402

· E-mail: hosini01@korea.ac.kr

* The schedule in PI (Program Information) can be changeable according to the KOICA and Korea University's schedule.

